

Novel Stability Problems in Pipe Flows

A Thesis

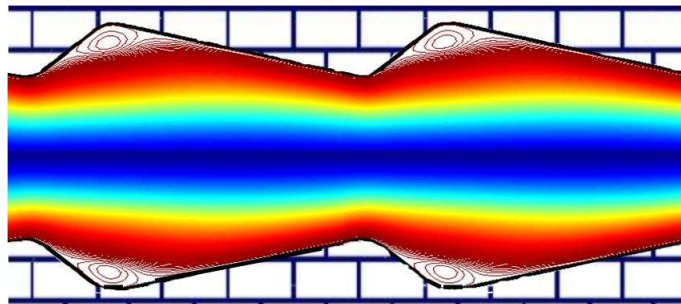
Submitted for the Degree of

Doctor of Philosophy

in the Faculty of Engineering

by

Kirti Chandra Sahu



ENGINEERING MECHANICS UNIT
JAWAHARLAL NEHRU CENTRE FOR ADVANCED SCIENTIFIC RESEARCH
(A Deemed University)
Bangalore – 560 064

APRIL 2007

To my parents

DECLARATION

I hereby declare that the matter embodied in the thesis entitled "Novel Stability Problems in Pipe Flows" is the result of investigations carried out by me at the Engineering Mechanics Unit, Jawaharlal Nehru Centre for Advanced Scientific Research, Bangalore, India under the supervision of Prof. Rama Govindarajan and that it has not been submitted elsewhere for the award of any degree or diploma.

In keeping with the general practice in reporting scientific observations, due acknowledgement has been made whenever the work described is based on the findings of other investigators.

Kirti Chandra Sahu

CERTIFICATE

I hereby certify that the matter embodied in this thesis entitled "Novel Stability Problems in Pipe Flows" has been carried out by Mr. Kirti Chandra Sahu at the Engineering Mechanics Unit, Jawaharlal Nehru Centre for Advanced Scientific Research, Bangalore, India under my supervision and that it has not been submitted elsewhere for the award of any degree or diploma.

*Prof. Rama Govindarajan
(Research Supervisor)*

Acknowledgements

This thesis could not be possible without the help, guidance, and constant encouragement of my thesis advisor, Prof. Rama Govinadrajan. She is a great source of inspiration for me. Indeed she has taught me what research is all about. She has been much more than my thesis advisor; she has been a parent to me during my study at the Engineering Mechanics Unit, Jawaharlal Nehru Centre for Advanced Scientific Research, Bangalore. I will always fondly remember my conversations, scientific discussions with her. I am fortunate to have her as my thesis advisor.

I am grateful to Prof. Roddam Narasimha for valuable discussions and suggestions, which helped me in grasping the fundamentals in my area of research, and was essential for the completion of this thesis.

I would like to thank Dr. K. R. Sreenivas for his help and encouragement towards the thesis. His valuable suggestions and ideas about the practical situations helped me to think from the point of view of experiments. It is a pleasure to thank Dr. Meheboob Alam for his encouragement. I wish to thank Dr. Ganesh Subramanian for discussing several research problems with me including the one of wall-slip flows.

I thank Prof. S.P. Vanka for giving me a foundation in Computational Fluid Dynamics, for his keen interest in the work and many helpful suggestions to accelerate the rate of convergence of our Navier-Stokes solver. I thank him for sharing his multigrid algorithm with us.

I gratefully thank Prof. U. N. Sinha, Dr. T. N Venkatesh, Dr. V. R. Sarasamma, Dr. Rajalakshmy S., Mr. Amit and Dr. Jaganath for building the MK6 parallel machine and paralling our Navier-Stokes solver at the Flosolver Unit, National Aerospace Lab, Bangalore.

I would like to thank Prof. A. K. Sood and Prof. G. Homsy for their helpful suggestions. I also wish to thank Dr. Narayanan Menon for many discussions. Grateful thanks to Prof. Tom Mullin for sharing his unpublished results of the developing flow in the entry region of a pipe and for discussions.

We acknowledge the Defence Research and Development Organisation, India for financial support. I would like to thank Council of Scientific and Industrial Research, India and Indian National Science Academy, India for providing me the financial support to attend the conference “Eleventh Asian Congress of Fluid Mechanics”, Malaysia (2006). I also wish to thank International Center for Theoretical Physics, Italy for the financial support to attend the workshop “Introduction to Microfluidics”, Italy (2005).

I would like to thank Dr. Jay Raj Kumar (Manipal Hospital) for many discussions on blood flow in human body. I really appreciate his encouragement. I thank Dr. Sameen for the collaboration to study the flow through a diverging channel with slip.

I would like to thank my lab mates: Sameen, Vinod, Vijay, Binaya, Mukund, Faraz, Subarna, Rajaram, Shreyas, Punit, Mani, Anubhab, Sanjeeb, Antina, Ratul, Harish, Pinaki, Kaushik, Ashish, Priyanka, Anjana and Gayathri for their constant supports, encouragement and creating a very good friendly and working environment in the Lab. Special thanks to Vijay, Kaushik and Raji for their help and encouragement.

I am ever grateful to my institute, JNCASR for providing the necessary infrastructure and financial support. I thank the office staff of JNCASR for their prompt and generous help. I would also like to thank the computer lab, JNCASR for providing excellent computation facilities. I am grateful to Dr. Umesh V Waghmare for allowing me to use all the complab facilities. I thank Rajesh, Shital, Ravi, Vikash, Masanam for helping me use the computer lab facilities.

During my Ph.D, I have come across many nice and friendly people. I would like to thank all of them whose presence have helped me a lot towards the completion of the thesis. I would like to thank Saswati, Gopal, Chandu, Jyoti, Sasmita and Jyotirmayee to make me feel homely at JNCASR. Thanks to Asish, Prasant, Motin, Joydeep, Subrata, Krupa for their support and encouragement. I would also like thank Ram and Sutirth for their help and encouragement in many situations.

I would like to thank few people outside JNC. I thank Amit Khatri (National Aerospace Lab) and Malik (Indian Institute of Science) for their encouragement. I am grateful to have friends like Subrat, Srikant, Om, Subudhi, Saroj and Sandeep. Special thanks to Subrat for several Spiritual and Philosophical discussions we have had. It indeed inspired me a lot.

Finally I would like to thank my parents for their constant care and blessings which helped me to grow in both professional and social life. I would like to thank my brother (Surya) and my sisters (Anu and Mami) for their love which gave me enough courage to face any problem. Last but not the least, I would like to thank Manisha for her support.

Synopsis

The main objective of this thesis is to study the instability and evaluate the likely mechanisms of transition to turbulence in divergent and small-scale (as discussed below) pipe flows. It was first demonstrated by Reynolds (1883) that pipe flow becomes turbulent at a particular value of a non-dimensional parameter which now bears his name. In recent times, this problem has received a lot of renewed attention [Faisst & Eckhardt (2003); Hof *et al.* (2003); Peixinho & Mullin (2006)]. With many demonstrations [see e.g. Hof *et al.* (2004)] that pipe flow may be maintained laminar up to high Reynolds numbers (of the order of hundred thousand), an understanding of the effect of variations in geometry and flow conditions are increasingly relevant.

Fully developed laminar flow (Hagen-Poiseuille flow) through a straight pipe is linearly stable at any Reynolds number, Re . In this case, nonlinear and transient growth mechanisms drive the transition to turbulence. However Hagen-Poiseuille flow is attained only when the pipe wall is straight and smooth and the pipe is long enough. The length required increases with Reynolds number. There are many variations from these conditions where linear instability can play a significant role in transition to turbulence. Some of these situations are addressed in this thesis. They are, flow through (i) a divergent pipe, (ii) a variety of diverging-converging pipes with constant average radius, (iii) diverging pipes/channels with velocity slip at the wall, and (iv) the entry region of a straight pipe. The instabilities of these spatially developing laminar flows is shown to be fundamentally different from flows that do not vary downstream. We have also studied separation in diverging channels and pipes.

It is not in general possible to derive analytical solutions for the laminar flows described above. We obtain the mean flow by solving the steady two-dimensional/axisymmetric Navier-Stokes equations exactly. For the accuracy desired, the computational time required for solving the elliptic equations is very large. A full-multigrid algorithm (FMG) is used to accelerate the convergence. The code is parallelised at the National Aerospace Laboratories, Bangalore. The FMG speeds up the solution by a factor of hundred as compared to many traditional algorithms like Gauss-Seidel and Jacobi iteration technique, and the parallel code (using an eight processor machine) gives a superlinear speed-up of 11 times over a single processor.

(i) The laminar flow through a divergent pipe is shown to be linearly unstable at any angle of divergence a , with the instability critical Reynolds number tending to infinity as the angle of divergence goes to zero. At small a ($< 1^\circ$) the instability is determined by a parameter $S(x) \equiv aRe$ describing the basic flow profile, and the mechanism is inviscid. The flow is linearly unstable to the swirl mode for $S > 10$. The instability critical Reynolds numbers are surprisingly low, e.g. about 150 for a divergence of 3° , which would suggest a role for such instabilities in the transition to turbulence.

For small angles of divergence and high Reynolds numbers, an axisymmetric Jeffery-Hamel

equation (AJH) is derived to describe the mean flow. At larger angles of divergence (1° or greater) the axisymmetric Navier-Stokes equations are solved directly. The partial differential equations for non-parallel stability are solved as an extended eigenvalue problem by a novel technique. (ii) We then study the effect of local asymmetric convergence/divergence on laminar flow through a pipe of constant average radius. The main finding is that the instability behaviour can be changed dramatically by reversing the direction of flow. This is offered as a possible mechanism that could be operating in small-scale flows, due to the presence of wall roughness.

(iii) Fluid dynamics and the role of the walls at small-scale can be very different from that at large scales. We make a minor foray into this regime, by considering the effect of wall slip at Knudsen numbers less than 0.1. Recent studies indicate that a velocity slip at the wall dramatically stabilizes the linear mode in a plane two-dimensional channel, but has very little effect on the algebraic transient growth of disturbances [Lauga & Cossu (2005)]. At microscales, apart from slip, local divergences and convergences of the wall are frequently encountered, here we focus on the effect of divergence. Whereas transient growth is more important in a plane channel, at wall divergences of less than a degree, it is linear instability, taking place two orders of magnitude lower in Reynolds number than in a plane channel, which is dominant. Unlike in a plane channel, the effect of velocity slip at the wall is to reduce stability. Transient growth is shown to be an insignificant player in the process of transition to turbulence.

(iv) The laminar velocity profile through a circular pipe is parabolic once the flow is fully developed. However, the distance l_e required to reach this fully-developed state can be very long, and scales linearly with the Reynolds number, Re , roughly as $l_e/R \sim Re/20$, where R is the pipe radius. Therefore high Reynolds number laminar flow through a pipe of limited length may never reach a parabolic state. We show that in such circumstances linear stability can play an important role in transition. We solve for the basic flow exactly, and conduct a non-parallel stability analysis, to show that flow can be linearly unstable even at a Reynolds number of 1000. In contrast to what is expected of a boundary layer type flow, disturbance growth is higher in the core region. Our results are consistent with that of experiment. Earlier theoretical studies predicted critical Reynolds number an order of magnitude higher than that observed in experiment and were in serious disagreement with each other.

(v) Some other studies which are in the preliminary stage are described at the end of the thesis. These include the study of pulsatile flow through a straight pipe. Prescribing time periodic velocity profiles at the inlet we have solved the Navier-Stokes equation directly using a full-multigrid algorithm on a parallel machine Venkatesh *et al.* (2005). We also studied separated flows in the diverging channel/pipe. At higher angles of divergence, we study flow separation in channels and pipes. The size, location and shape of the separated region for divergent angle varying from 0 to 90 degree are discussed in the thesis. In future, we are planning to conduct full non-parallel stability analysis e.g. global stability analysis of such flows without the approximations made in this thesis.

Refereed Publications

1. "Stability of flow through a slowly diverging pipe", Kirti Chandra Sahu and Rama Govindarajan, *J. Fluid Mech.*, 531, 2005, 325 - 334.
2. "Super-linear speed-up of a parallel multigrid Navier-Stokes solver on Flosolver", T. N. Venkatesh, V. R. Sarasamma, Rajalakshmy S., Kirti Chandra Sahu and Rama Govindarajan, *Current Science*, 88(4), 2005, 589 - 593.
3. "A possible linear instability mechanism in small-scale pipe flows", Kirti Chandra Sahu, *Proceedings of Sixth IUTAM Symposium on Laminar-Turbulent Transition*, Springer, 2006, 127-132.
4. "Instability of entry flow in a pipe", Kirti Chandra Sahu and Rama Govindarajan, *Proceedings of Eleventh Asian Congress of Fluid Mechanics*, May 22-25, 2006, Kuala Lumpur, Malaysia.
5. "Linear instability of the developing flow in the entry region of a pipe", Kirti Chandra Sahu and Rama Govindarajan, *ASME Journal of Fluids Engineering*, to appear

Conference Paper

6. "Instabilities in decelerating pipe flow", *Proceedings of STATPHYS 22*, Bangalore, July, 2004.

Preprints

7. "The relative roles of linear instability and transient growth in divergent channel flow with slip", Kirti Chandra Sahu, A. Sameen and Rama Govindarajan, preprint

Contents

Acknowledgements	v
Synopsis	vii
Nomenclature	xi
List of Figures	xix
1 Introduction	1
1.1 Previous work	2
1.1.1 Flow through a straight pipe: route to turbulence	2
1.1.2 Spatially developing geometries	5
1.1.3 Flow through non-circular/flexible pipes	6
1.1.4 The developing flow in the entry region of a pipe	6
1.1.5 Pulsatile flow	7
1.2 Microflows	8
1.3 Non-parallel stability analysis of 2D flows	9
1.4 Outline of the thesis	10
2 Flow through a diverging pipe	13
2.1 Mean flow	13
2.1.1 Numerical solution	14
2.1.2 Axisymmetric Jeffery-Hamel equation	16

2.2	Non-parallel stability analysis	24
2.2.1	Derivation of three-dimensional stability equations for axisymmetric mean flow	24
2.3	Inviscid stability analysis	29
2.4	Results of the stability analysis	33
3	Flow through converging-diverging pipes	41
3.1	Mean flow	41
3.2	Results of the stability analysis	45
4	Small-scale flows: the influence of wall slip	49
4.0.1	Mean flow	49
4.1	Three-dimensional stability equations for divergent channel flow	52
4.2	Results of the stability analysis	53
4.2.1	Flows through diverging channel	53
4.2.2	Flows through diverging pipe	61
5	Developing flow in the entry region of a pipe	63
5.1	Mean flow	63
5.2	Results of the stability analysis	65
6	Other studies	71
6.1	Pulsatile flow through a straight pipe	71
6.2	Floquet stability equations for pulsatile flow	76
6.3	Flow separation in divergent channel/pipe	78
7	Conclusions	81
	Appendices	83
I	Multigrid Algorithm for Two-dimensional Poisson Equation	83
A	Simple V-cycle algorithm	84
B	Multigrid algorithm	84

II	Chebyshev Spectral Collocation Method	87
A	Chebyshev Expansions	87
B	Differentiation in Chebyshev Plane	88
	Bibliography	91